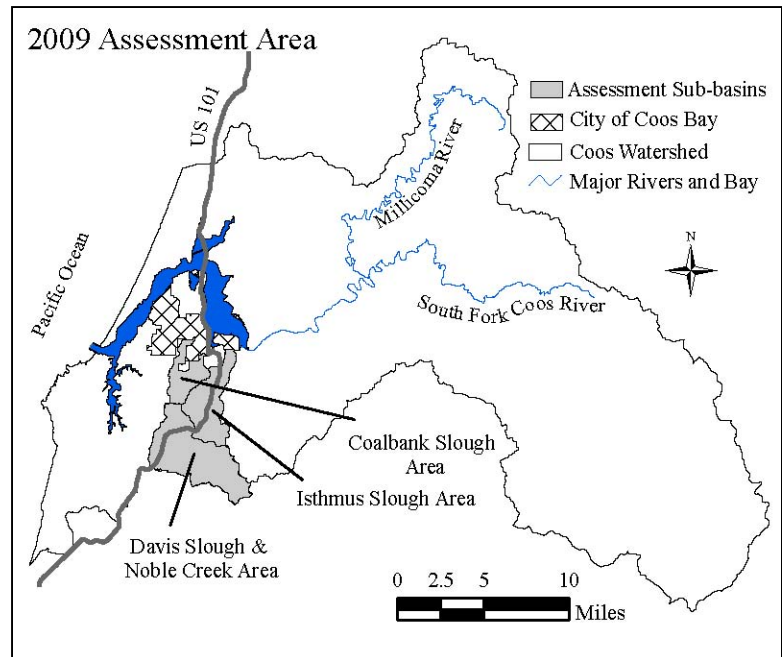


FOR IMMEDIATE RELEASE

Coos Watershed Association Begins Sub-basin Assessment and Neighborhood Meetings

Coos Bay, OR (Coos Watershed Association), June 2, 2009 – The Coos Watershed Association (CoosWA) would like to meet with landowners and land managers in the Coalbank and Isthmus Slough sub-basin areas, including Davis Slough and Noble Creek drainages, lying south of Coos Bay. The Association will be developing sub-basin assessments and exploring habitat and water quality restoration opportunities in the 21,800 acre area as information is gathered and analyzed over the next year. CoosWA seeks to better understand the local socio-economic conditions in these assessment areas as well as provide residents with information about the sub-basin they live or work in. During neighborhood Coffee Klatch meetings (three are scheduled in June) CoosWA will explain more about the assessment and restoration process, and gather information from area landowners about their property management concerns and goals. This information is used to help characterize sub-basin conditions and in prioritization of restoration projects. Coffee Klatches are intended to be an exchange of information and an opportunity for neighbors to meet and discuss ways to improve local conditions. Postcard invitations to Coffee Klatches are being mailed to many residents, and *everyone* owning land in the assessment area is invited to attend one of the three upcoming events.



The Lower Isthmus Slough will meet at the Millington Fire Hall June 11th, Davis Slough and Noble Creek area landowners will meet at the Greenacres Grange Hall June 18th, and Coalbank area landowners will meet at the Coos Bay Public Library June 24th. All Coffee Klatch meetings begin at 7pm and you can pre-register by calling 888-5922 or e-mailing cooswa@cooswatershed.org.

Many residents in the area have also received letters about our stream surveys beginning this summer in the Isthmus and Coalbank sub-basins. Stream surveys inventory salmon habitat features of the stream, such as pools, large wood and sediment, and rate the habitat conditions according to the needs of salmon throughout their life cycle. Other types of information gathered for the assessment include road drainage features, culvert conditions, and riparian shade.

Meeting with landowners and managers – those that make property management decisions – provides the necessary link between sub-basin data analysis and the feasibility of actually improving watershed conditions for everyone involved. For more information or to register for a Coffee Klatch, please call 888-5922, e-mail cooswa@cooswatershed.org, or learn more on our website at www.cooswatershed.org.

About the Coos Watershed Association – The Coos Watershed Association is a local 501(c)(3) non-profit organization formed in 1994 as a way for people with a wide range of interests to get together

and discuss the “big picture” of the conditions of the Coos watershed. The Association implements restoration, monitoring, and outreach projects throughout the Coos watershed with the goal of restoring and maintaining healthy, functioning stream systems. The Association also helps individual landowners decide how to manage and restore the watershed’s natural systems.

Contact:

Bessie Joyce, Jon Souder, or Marley Bice

Coos Watershed Association

541-888-5922

541-888-6111 (fax)

cooswa@cooswatershed.org

<http://www.cooswatershed.org>

#####